

THE GONIL INK



Fall 2010

The Times They Are a-Changin'

May 2, 2000 - "Selective Availability"

May 3, 2000 - The first documented placement of a GPS-located cache

April 9th, 2005 - A historic moment in geocaching (GCMMV5)

My initial attraction to geocaching was the idea that there was a subculture operating unnoticed by the masses. I wanted to be a part of it. Geocaching in the early days was certainly an underground activity but times change and we must change with them.

Fast forward to the present and we find that Geocaching is quickly becoming a mainstream activity. As this activity grows, how we adapt to change will determine how the next chapter will unfold.

I would like to invite each of you to consider how you can contribute to the advancement of Geocaching through participation in an organization such as the "Geocachers of Northeastern Illinois". If you would like to get involved please contact me or any of the other board members, the opportunities are endless.

Howard Berklund

President Geocachers of Northeastern Illinois

Trail Name - badlands

The Times They Are a-Changin' (Dylan 1964)



Upcoming Events

The September Chill! GONIL ICS

Saturday, September 18

6:30pm - 8:30pm

GONIL's First Official Fall Camping Weekend

Friday - Sunday

October 8 - October 10

GONIL October Ice Cream Social- Twisted Cows

Friday, October 22

6:00pm - 9:00pm



What's in Your Caching Bag?

Written by pegasus133/Karen Schultz

When I first began this sport/hobby called geocaching, my caching bag was sparse. It contained a couple of pens, a notebook to keep track of caches that either I had found or I had DNF'd and that was pretty much it. As most geocachers will probably tell you, it has been thru experience that I have learned what "tools" and necessities should be with me at all times and that list will change depending on what type of hunt I am on.

As with most newbie cachers I would read the cache description as well as the size of the container, difficulty level and terrain level but I was clueless as to what that exactly meant. And what did that tell me as far as what I should have in my caching bag? That amounted to another clueless moment. But happily I would head out into the woods with my high tech equipment in search of containers in the woods. I would arrive at GZ in the woods and begin my search. Determining what to look for was a whole new experience as to how and where containers can be hidden. Regardless of the size I realized the cache could be hidden anywhere and that included any opening in a tree regardless of whether it was standing, leaning or on the ground. It also, in my mind included any and all holes in the ground side of hills, rock piles or under tree roots. This was not a bad theory, however, it meant that I would stick my hand in those holes without even a thought as to what else might be in that hole. Yes, I was so exuberant in my searching that it did not even dawn on me that I was in the woods and could quite possibly be sticking my hand into some critters home. When one of my more experienced geobuddies realized what I was doing, he warned me that one of these days I would be sticking my hand in somewhere and coming up with a very unhappy critter. Hmmm I don't know about you but that was not something I wanted to experience, even on a good day. Now since I had been using this tactic for quite awhile it had become a habit and took some time for me to be retrained. In the retraining process I had come up with the brilliant idea that I would use a stick instead of my hand to check out a hole. So during a search with a geobuddy, I was jabbing a stick in a hole when he realized what I was doing and quickly explained that this method was not good because now I would be jabbing at a critter in the hole. Hmmm once again an angry critter is an experience that I think I will take a pass on. Needless to say a few days later my geobuddy gave me my first "tool". I was given a small mirror that is attached to an extendable handle. Wow, I must say that this "tool" has been a life saver on more than one occasion. Thus began me acquiring new "tools" to be carried with me.

There are some "tools" that I carry with me no matter if I am either on a short hike, a long hike or in search of a cache in a lamp post skirt. My geocaching bag at all times includes: extra batteries, cell phone fully charged, bottle or two of water, bandana, whistle, compass, flashlight, multi tool, couple of pens/pencil, small notebook to keep track of caches I have found and haven't found, swag for trading, camera, items for cache maintenance (extra log sheets and plastic zip lock bags). For longer hikes in the woods I will carry a backpack with the items from my usual geocaching bag: additional bottles of water, bug spray, Palm, snacks, and a few replacement cache containers. There are also items that I keep in my car just in case something happens which includes: blankets, a change of clothes, extra pair of shoes, paper towels. Believe me I have had to use these on more than one occasion when I have fallen into a creek or been caught in a downpour in the middle of the woods.

There are so many other items that I have seen geocachers carry with them that the list would be never ending. I have geobuddies that have used fishing poles, tape measures, butterfly nets, golf ball retrievers, homemade extension poles with contraptions taped to the end of the pole, just to name a few and all were used in retrieving a cache. These "tools" remind of a TV show from the 80's called "MacGyver" and adds a whole new dimension to caching. So I ask you the question, what's in your geocaching bag?

From the Board Room....

As the busy summer caching season approaches and a tendency for more events to publish the board felt we should address some confusion about GONIL events and what each level means and also how to get your events listed on the GONIL homepage.

GONIL Events: These are events put on by GONIL itself. These are sanctioned by the board and will have the official GONIL logo listed on the cache page along with the places by being listed as the Geocaching Organization of Northeastern Illinois.

GONIL Sponsored Events: These are events hosted by a member of the caching community where the host has asked for some type of support, financially or otherwise from the GONIL board. And only with approval of the board can an event be listed as Sponsored by GONIL. Event hosts must give the board at least 30 days notice for a request so the board can make an informed decision on this action.

GONIL member events: These are the events most often taking place. These are an event hosted by a GONIL member and they have one of the Member of GONIL logos listed on the event page.

The one requirement to have an event listed on the GONIL home page and also under the Upcoming events section of the GONIL forums is to go to the members logo page and place one of the Members of GONIL logos on the event page. The logo must remain on the event page prior to the event to continue being listed on the site.

If you have any questions regarding an event started or sponsorship for an event please email the board at Board@GONIL.org



Future newsletter deadlines:
 Spring~
 submission deadline
 February 28th
 distribution in March
 Summer~
 submission deadline
 May 31st distribution
 in June
 Fall~
 submission deadline
 August 31st
 distribution in September
 Winter~
 submission deadline
 October 31st distribution
 in December



Diaries of a FTF Hound - The Unfindable cache.

by: MGb

This story is relevant to the FTF hounds, because the subject of this story is unfound. Cacher Fuzzy B from Central Illinois owns a cache in the Peoria area called A Real Challenge, a cache which to this day remains unfound. Several months ago, Fuzzy was kind enough to correspond with GONIL Ink regarding this cache.

At the time of the interview, A Real Challenge had accumulated quite a resume. A bookmark list called "The Unfoundlings" was the basis for research in compiling stats for this interview. The Unfoundlings contained 53 caches from all over the world that have gone unfound for over 6 months, and have cachers maintaining an active interest - either by watchlist or by posting notes/DNF's.

On that list are caches that are under water, caches that have challenging puzzles, challenge caches as hard or harder than the Illinois all-county challenge, and caches near the arctic. Then, there is A Real Challenge, which is in a shelter in a forest preserve.

At the time of the interview, A Real Challenge had 119 DNF logs posted (currently 131) and was being watched by 90 users (currently 104). For reference, the Midwest Geobash had 94 watchers as of the interview Fuzzy B had posted 36 notes on the page, reporting the cache is safe and secure and sometimes answering accusatory notes from frustrated cachers.

Getting back to the Unfoundlings, A Real Challenge has far overshoot every other cache on this list in nearly every category. The next highest number of DNF's on a cache on that list is 36, less than half of A Real Challenge. The next highest number of watchers is 72, on "Fairly Useless Cryptic Hints" (GC10W36) in our neighbor state of Indiana. And that one is not surprising considering the cache owners, as the name would suggest, regularly post "cryptic and useless hints" on the cache page.

A Real Challenge remains unfound and has attracted cachers from far and wide to try and be "the one" who finds it. Every one has walked away empty handed. Fuzzy B threw down the gauntlet 3 years ago on a note from November 11th stating "Ok, looking for lots of DNF's on this, why not log your attempt?? Lets set a local record with this one." But even Fuzzy didn't see this coming. And he's enjoying every minute of it, stating "When I look past the negative comments, it becomes more enjoyable as time goes on."



Events are the Icing on my "geocaching" cake.

Ever since I went to my first event I love to post a "will attend".

It started with the WWFM IV event near our place.

We were supposed to go to a square in the center of Tilburg and start singing our national Hymn at exactly 7:00 PM. Arriving, singing, logging and leaving was supposed to take no longer than 15 minutes. The chatting afterwards lasted a bit longer of course.

Most funny one of the flash mob events I attended until now was WWFM VI, standing still and being quiet (very tough) for 2-3 minutes in the large entrance of a train station.

The faces of people passing by, not knowing what was going on, were just undescrivable.

Then there also was my first CITO event: GC1VHGA

The woods were clean enough, so no trash had to be collected. But we had to remove small trees that were of no importance in the sand-dunes. More than 50 teams participated. We all worked very hard. Afterwards, as a bonus, we had a guided tour by a forester, which was very interesting.

For two years in a row I attended a Multi-Event a bit further from home. More than 1000 cachers come from all over Holland and Germany.

Caching our way towards the location, doing the new caches over there, drinking and eating from the large buffets. No better way to spend a day.

Also great events are the ones where we have either a bbq, a New Years toast, Chinese food, Easter eggs or Ice cream! Most of the time many of our local cachers attend. Meeting old friends and making new ones is fun. Cache experiences are being discussed and small hints for solving mysteries are being exchanged.

Some time ago one of the event-organizers heard me talking about the GONIL Ice cream Event. He loved the concept as much as he loves ice cream.

So within 3 weeks, on the same day as your latest GONIL Ice cream event, Dutch cachers joined together for our "First Dutch Ice-cream Event" GC2BDWX. It will certainly not be the last.

No real events, though we log them as one, are the "surprise" events.

For instance the "kerstcache surprise event" GC1GRVG.

Each team that participates makes a cache for another team. So it is a "surprise cache" for only one cacher, only to be found by him during a couple of days and logged as an attend on the event page.

We put small gifts in it for the kids if there are any in the team. Or just a small, not expensive, item for the cacher.

And a rather new kind of event is our "Dauwtrappersevent" GC28HGB.

If I had to translate the name it would be something like: "Stepping in the dew event".

The cachers come together at dawn at the location. Together we go and search for the cache.

Afterwards, just before everyone leaves for work again, we all drink a cup of coffee together.

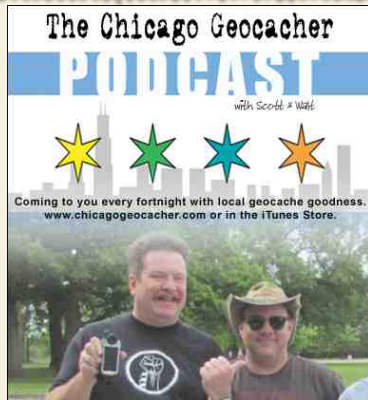
If you read this before or while attending your "Chicagoland Geocachers' Picnic and Pig Roast" event:

Have a nice time. I sure hope to attend a GONIL event one day and make it my first American.

See ya!

Dutchlandian.





<http://chicagogeocacher.com/>

2010 Picnic Sponsors

GSAK	1 Free Software License
LandSharkz	2 Landsharkz trackable geocoins
Cache advance	1 \$15.00 Gift Certificate
TMA	2 GONIL Trackable Tokens
“ “ “	2 Portable FRS two way Radios
Howard	1- 50 cal. & 1-30 cal. RTG caches
World caching	2 Copper finish sun catcher coin sets
My Geocaching store	3 \$5.00 gift certs and free gift /order cards
DMNelson	TCF bank Neck Lanyards
Chicago Bears	Autographed Picture
Chicago Wolves	2 \$ 17.00 2010-11 tickets
bluejay270	1 2XL yellow Geo shirt & 1 Camo Geo Hat
StoreGuns.com	Waterproof Cylinder storage case
Hogwild Stuff	Lanyards, Bison Tubes, Geocoins, Pins misc.
Larry Roth	2009 Groundspeak Lackeys Coin
“ “ “	GCinOhio Geofest Coin
“ “ “	2008 Podcacher.com Coin
“ “ “	Rayovac flashlight three pack
Katydoodle	Cache Container
ESG Fire Equip.	4 LED mini flash lights (key ring Hat mount)
“ “	2 Winchester 2 Blade folding knives

This newsletter is a publication of Geocachers of Northeastern Illinois. The Articles and information contained herein is intended for use of the membership.

All submissions are subject to the approval of Geocachers of Northeastern Illinois and the Editorial staff of the newsletter. The editors can accept no responsibility for errors of omissions. Any opinions expressed are solely those of the editorial staff and/or Geocachers of Northeastern Illinois and its members.